

1 Using the Merge tool to merge two independent projects

1. Deactivate any project
2. Load the two example projects “Transmission Example” and “HVDC Offshore Wind Farm” from the *PowerFactory* Examples.
3. Right click on the project to which the data needs to be transferred and choose the command *Select as Base to Compare*. From now on, this project will be referred to as *Base*. In all snapshots the base project is exemplified as being the “Transmission Example” project.
4. Right click on the project from where the data needs to be taken and choose the command *Compare to Base Project Name*. From now on, this project will be referred to as *1st*. In all snapshots the *1st* project is exemplified as being the “HVDC Offshore Wind Farm”.
5. The Compare and Merge Tool command will be shown. Select the option *Manually* → *Into* → *Base*
6. Click on **Execute**
7. Initially assign all data from *1st* to *Base*:

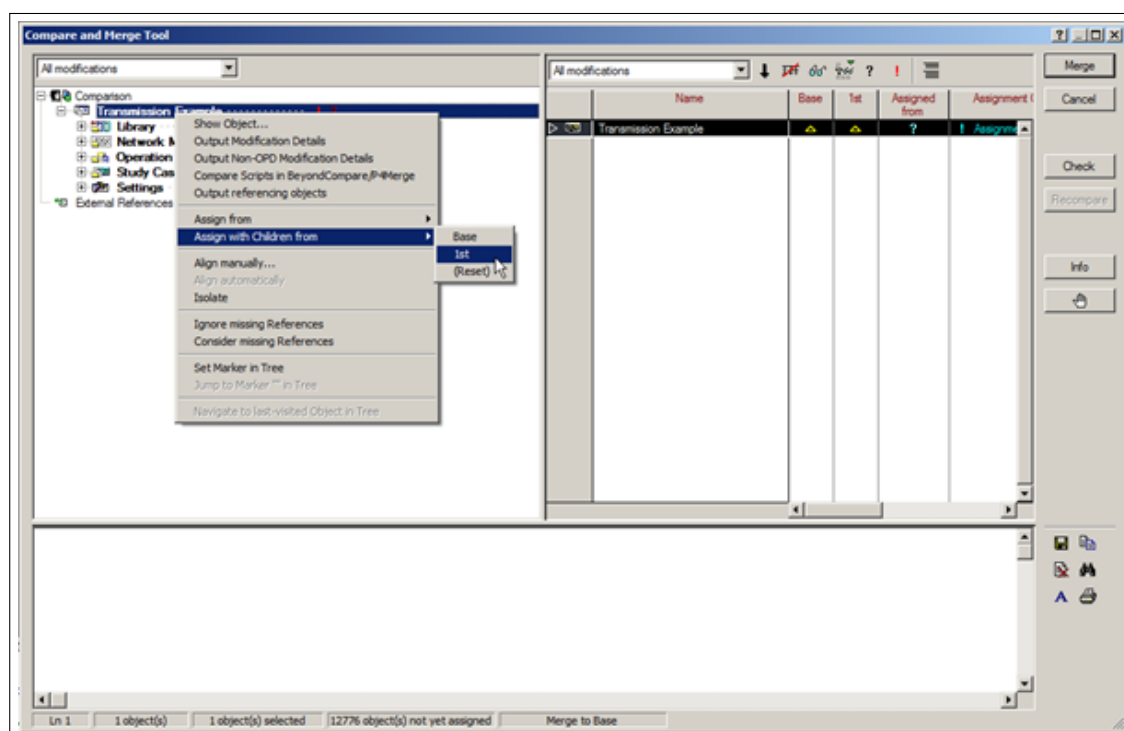


Figure 1.1: Comparison and Merge Tool window

8. All data that is belonging to the *Base* will be removed if *PowerFactory* is not instructed to retain it. The process to keep data from *Base* is manual. Each folder of the *Base* needs to be verified. In Figure below, the contents of the *Equipment Type Library* folder are shown. All data originating from the *Base* project is marked by a '+' sign in the *Base* column. For these data, the current assignment from *1st* needs to be changed to *Base* in the column 'Assigned from'. To simplify the procedure, one may order the contents of the folder by left clicking on the *Base* column header.

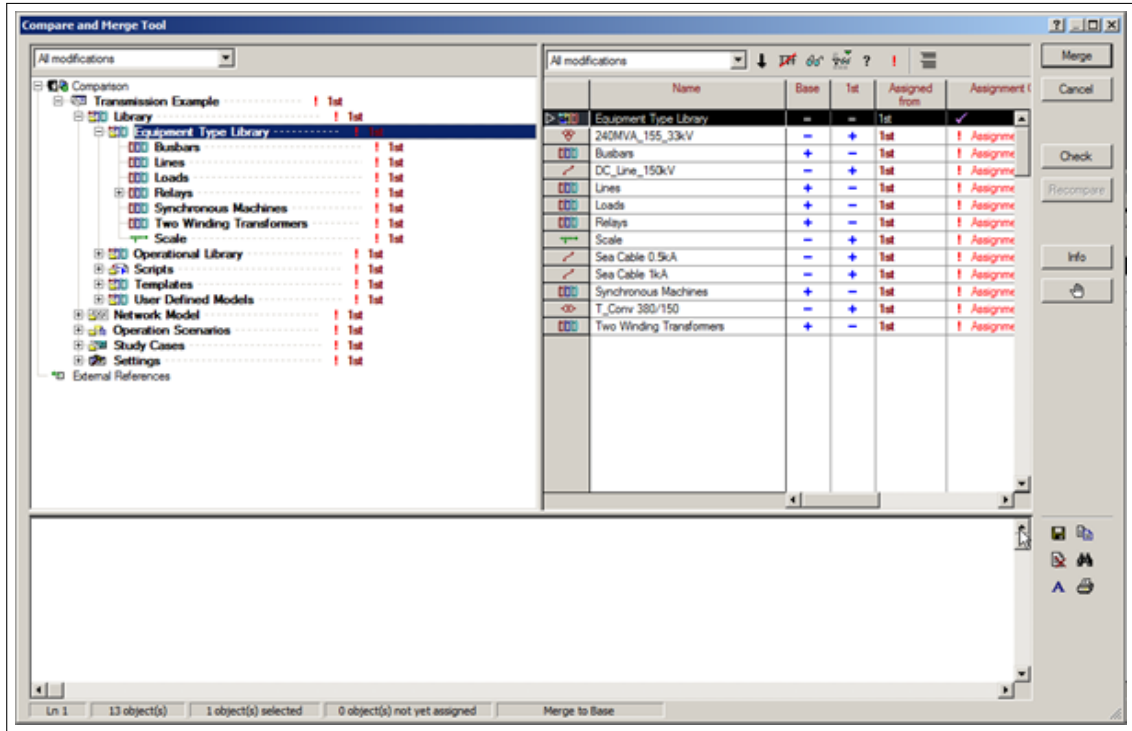


Figure 1.2: Conflicts

- Multi-select all items having the '+' sign in the *Base* column, right click and choose *Assign with children from* → *Base*

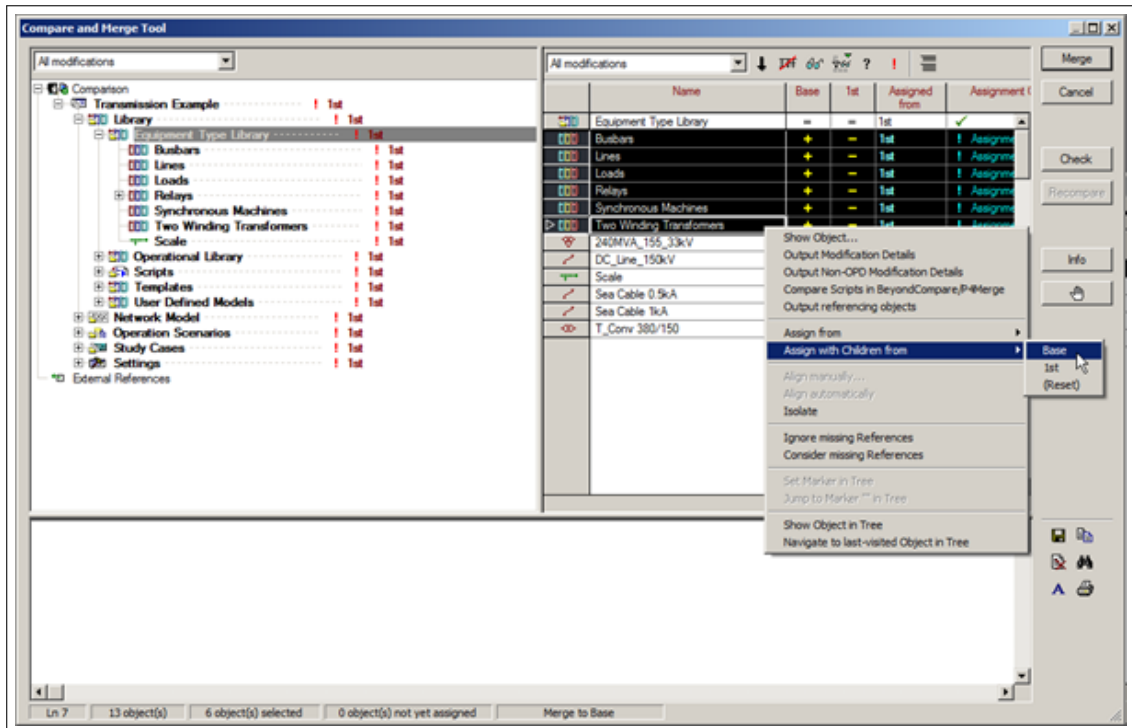


Figure 1.3: Assign with Children From

- Repeat step 8 for the folders *Library/Operational Library*, *Library/Scripts*, *Library/Templates*,

Library/User Defined Models, Network Model/Diagrams, Network Model/Diagrams, Network Data, Network Data/Variations, Network Data/Areas, Network Data/Boundaries, Network Data/Paths, Network Data/Zones, Operation Scenarios, Study Cases, Settings and any other project folders that may contain information from the Base project.

11. Click on **Check** button and observe the errors (if any) being shown in the output window.

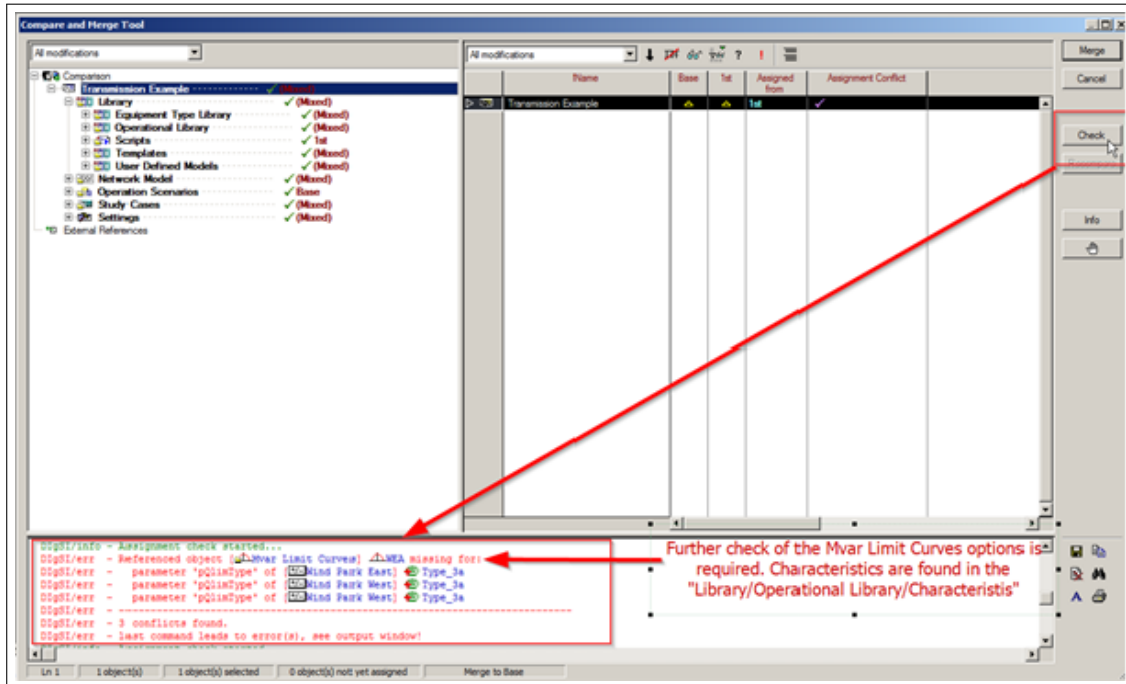


Figure 1.4: Check Command

12. After all referencing errors have been solved, click on **Merge**.
13. Activate the "Transmission Network" project. It should contain information from both projects as shown below:

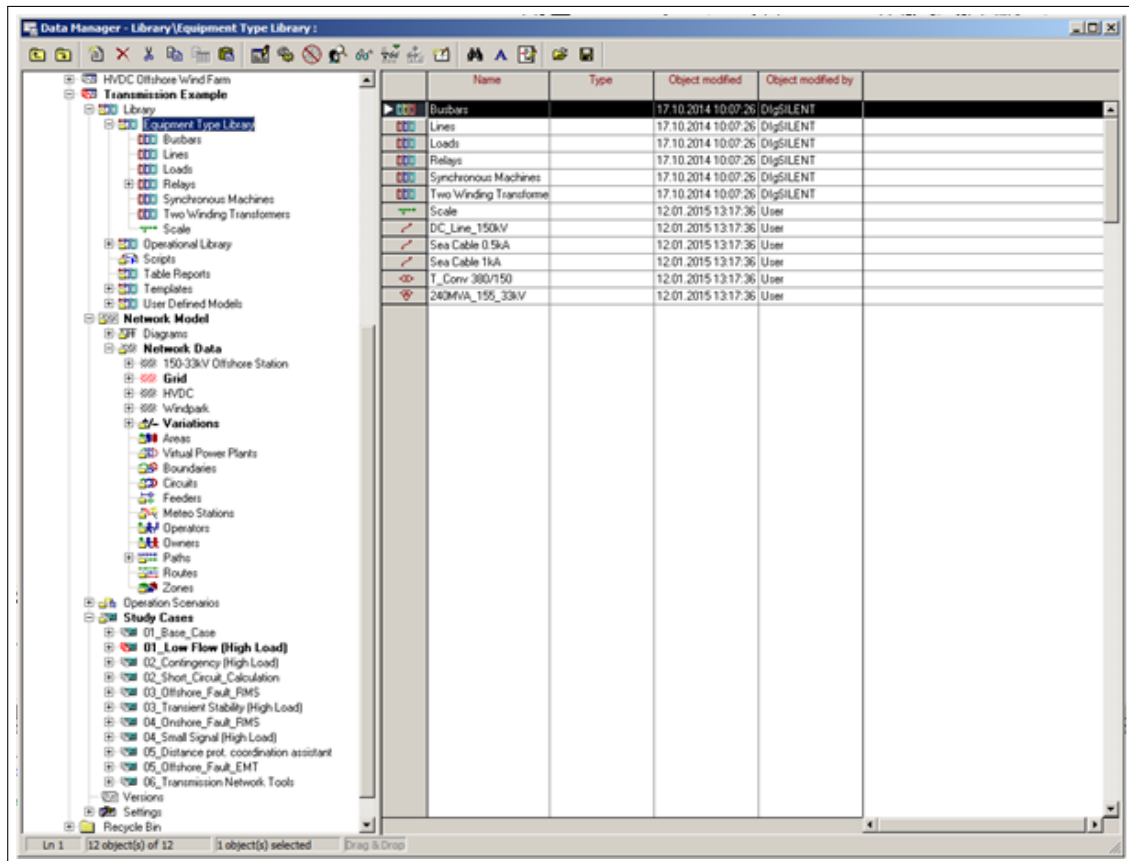


Figure 1.5: Final project Data Manager view