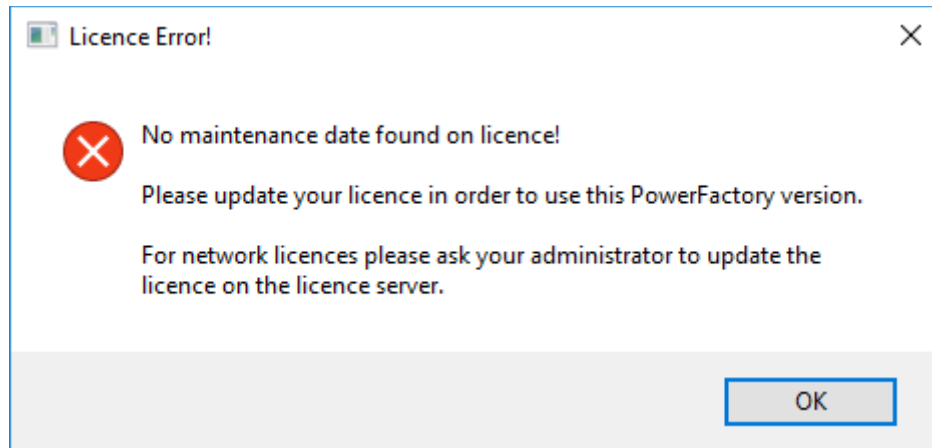



## How do I update my license?

From PowerFactory 2019 the maintenance date is included on the license. When starting a PowerFactory version it will be checked if the release date is within the maintenance period to ensure you are allowed to use this version. So when migrating to PowerFactory 2019 or a later version you are forced to update you license.



In order to update you license you have to go to the "License Manager". The "License Manager" is automatically installed alongside PowerFactory and you should find it easily via searching all programs. Open the "License Manager" and press the button "Update License"

 DlgSILENT PowerFactory Licence Manager



## PowerFactory Licence Management

